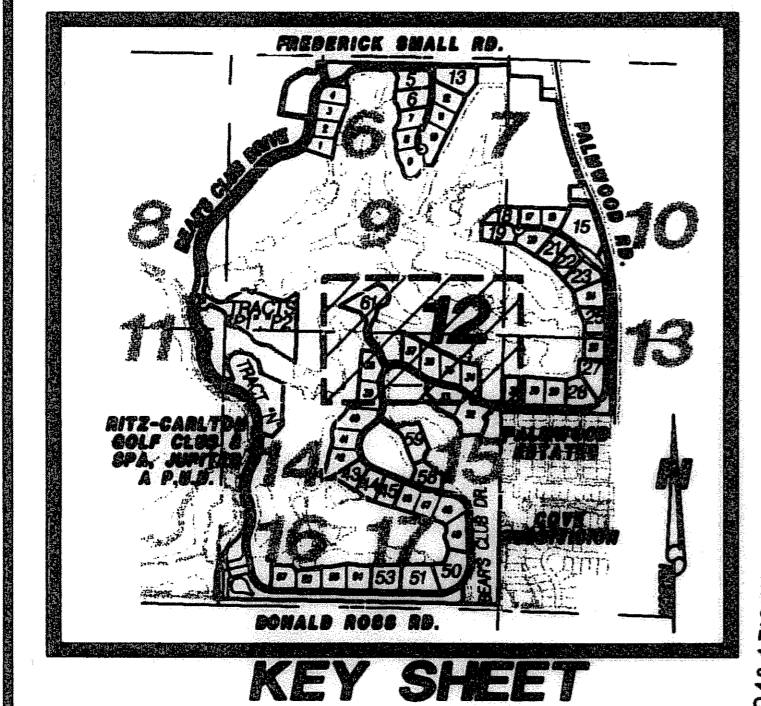
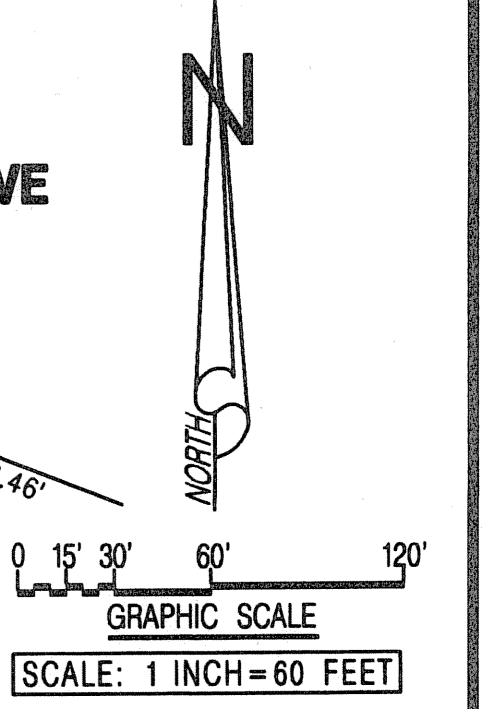
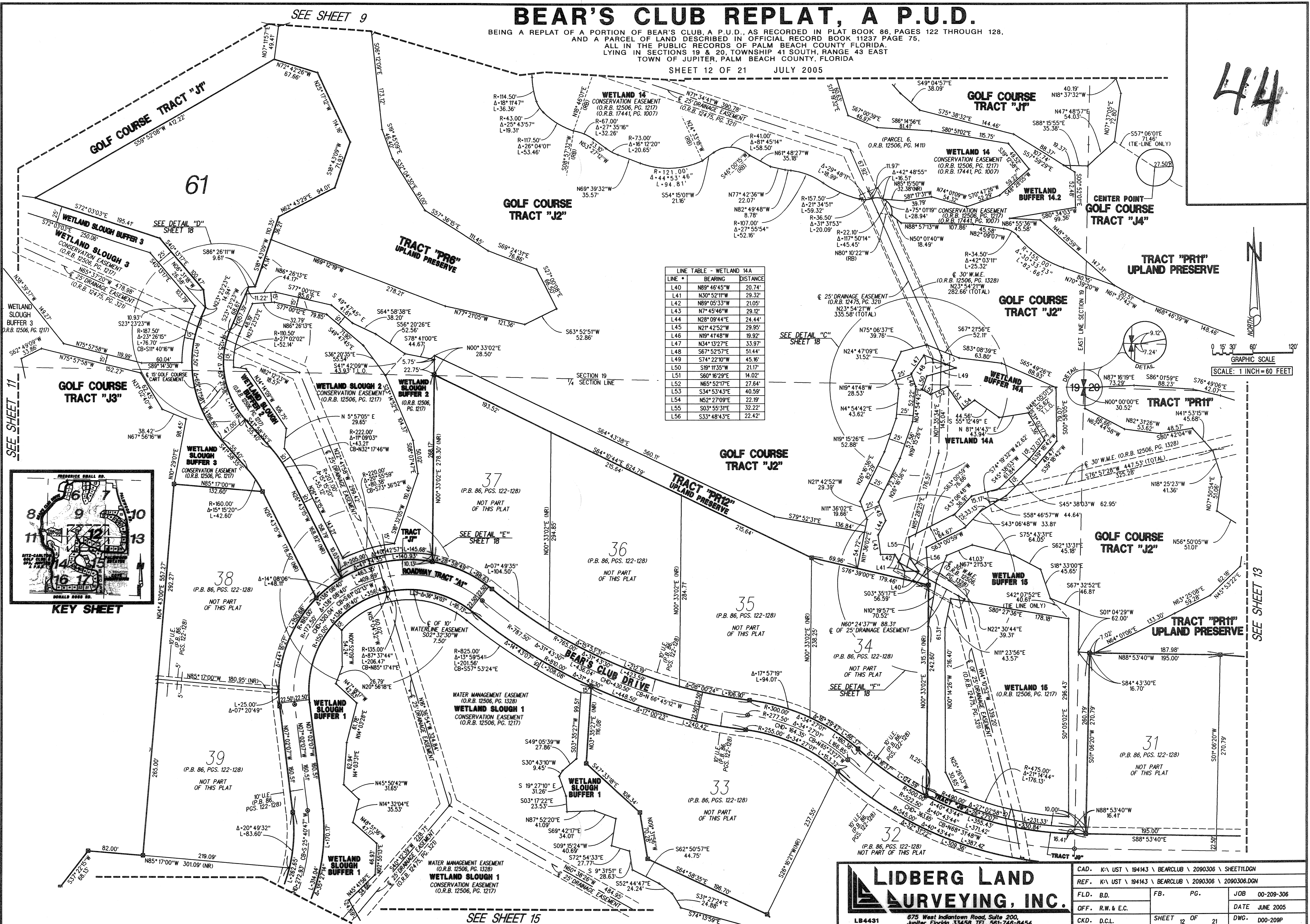


# BEAR'S CLUB REPLAT, A P.U.D.

BEING A REPLAT OF A PORTION OF BEAR'S CLUB, A P.U.D., AS RECORDED IN PLAT BOOK 86, PAGES 122 THROUGH 128, AND A PARCEL OF LAND DESCRIBED IN OFFICIAL RECORD BOOK 11237 PAGE 75, ALL IN THE PUBLIC RECORDS OF PALM BEACH COUNTY FLORIDA, LYING IN SECTIONS 19 & 20, TOWNSHIP 41 SOUTH, RANGE 43 EAST TOWN OF JUPITER, PALM BEACH COUNTY, FLORIDA

SHEET 12 OF 21 JULY 2005

44



**LIDBERG LAND SURVEYING, INC.**  
675 West Indiantown Road, Suite 200,  
Jupiter, Florida 33458 TEL. 561-746-8454

|                                                 |                |
|-------------------------------------------------|----------------|
| CAD. K:\UST\194143\BEARCLUB\2090306\ SHEET1.DGN |                |
| REF. K:\UST\194143\BEARCLUB\2090306\2090306.DGN |                |
| FLD. B.D.                                       | FB. PG.        |
| OFF. R.W. & E.C.                                | JOB 00-209-306 |
| CKD. D.C.L.                                     | DATE JUNE 2005 |
| SHEET 12 OF 21                                  | DWG. D00-209P  |